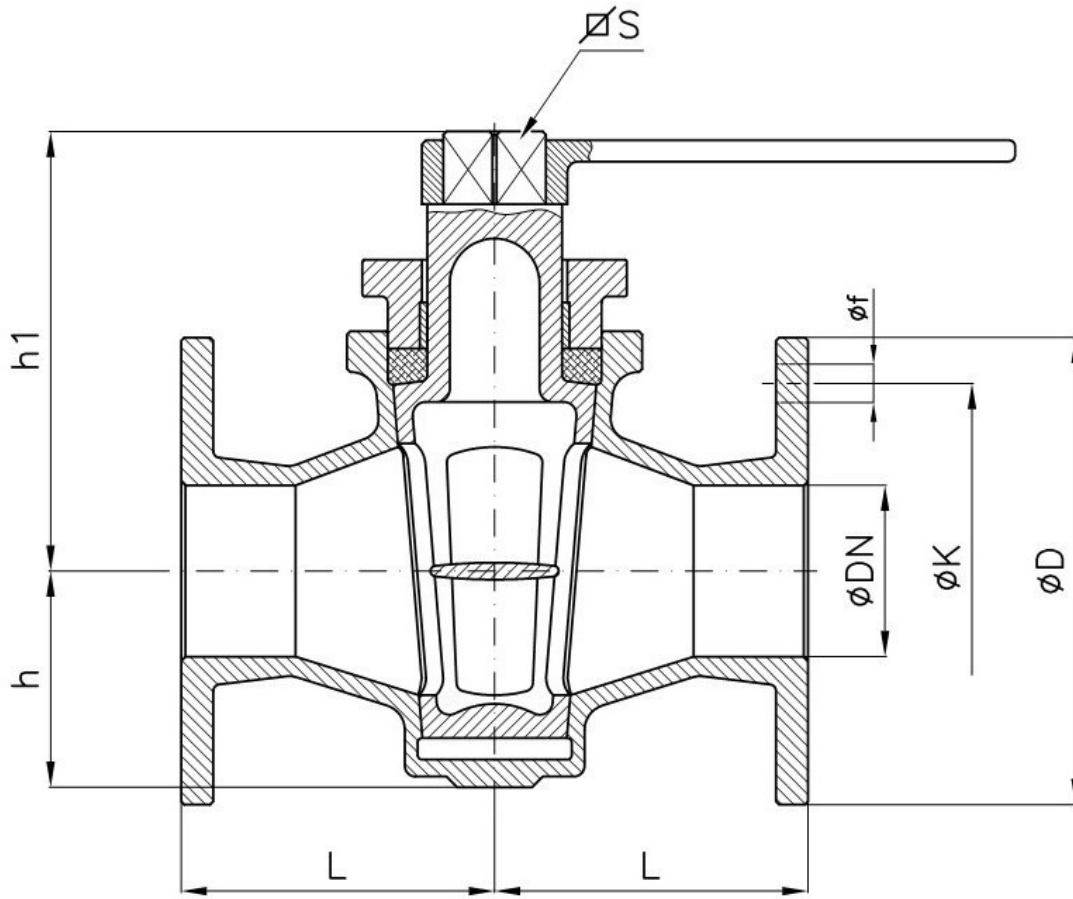


PLUG COCK WITH GLAND 2-WAY NP6-NP16



	Body/Gland	Plug	Screws/Nuts
Materials	CuZn5Pb5Sn5 UNI EN 1982	CuZn5Pb5Sn5 UNI EN 1982 or CuZn40Pb2 UNI 5705	X5CrNiMo17-12-2 UNI EN 10088

DN	Bronze				NP6				NP16			
	L	L1	h1	S	D	K	f	Num. HOLES	D	K	f	Num. HOLES
15	50	42	87	16	80	55	11	4	95	65	14	4
20	50	42	87	16	90	65	11	4	105	75	14	4
25	50	42	87	16	100	75	11	4	115	85	14	4
32	55	60	115	19	120	90	14	4	140	100	18	4
40*	65	61	120	19	130	100	14	4	150	110	18	4
40**	70	61	120	19	130	100	14	4	150	110	18	4
50	75	80	150	28	140	110	14	4	165	125	18	4
65	95	90	190	35	160	130	14	4	185	145	18	4
80	110	110	215	38	190	150	18	4	200	160	18	8
100	125	130	240	44	210	170	18	4	220	180	18	8

* : light class ** : heavy class